



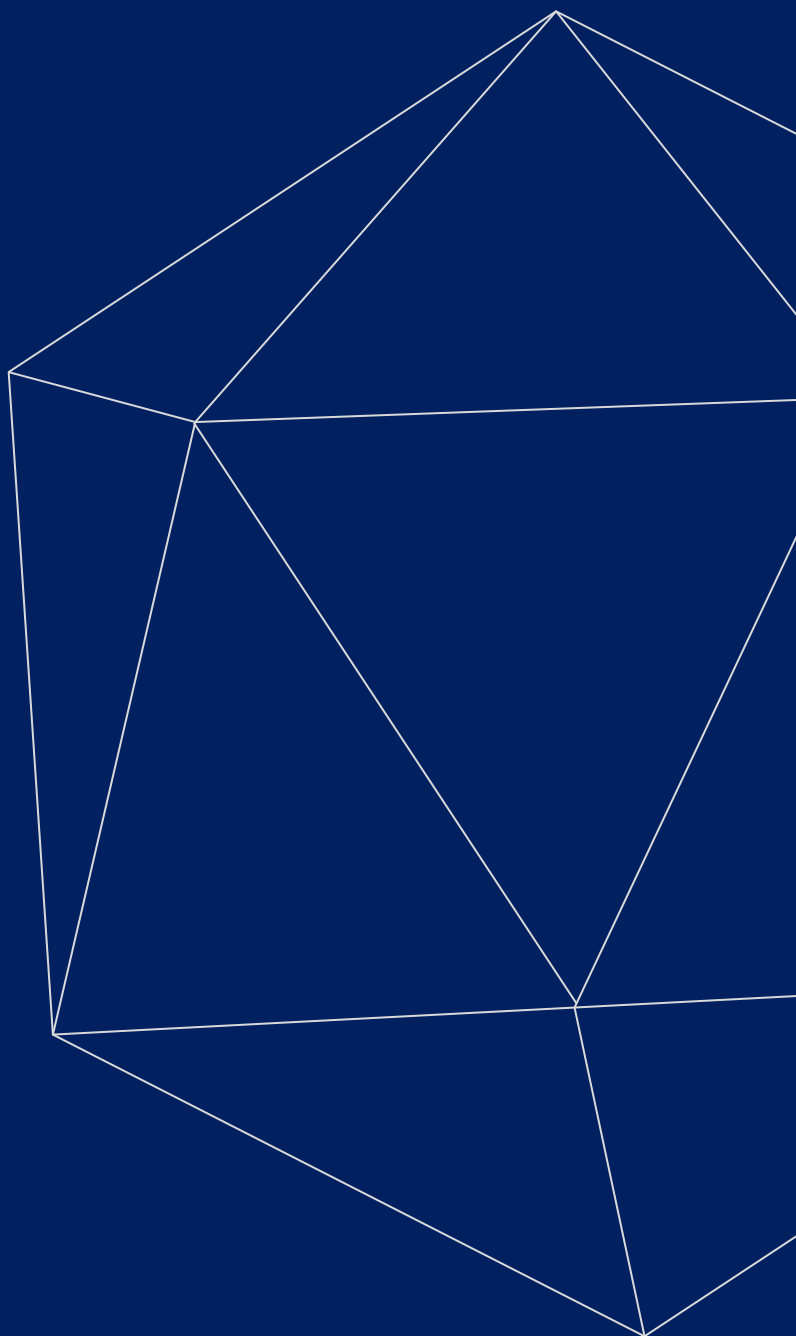
LABORATORY LINES

pH METERS



Kalstein®

A different accompaniment, at your service



OUR SERVICES

Benefits and Support

In Kalstein France, we take care of the full satisfaction of our customers, that is why we provide value-added services of the highest level based on our experience.



Online Inductions and Trainings

In any part of the world, receive your induction or training from our specialized team of engineers



Quick Response

Our work team is always available to response all your consults or questions, in order to support you in any situation.



#Letsgivemore ♥

Thanks to your purchase, a donation is made to a non-profit foundation that fights against cancer and helps vulnerable communities.



Technical Support

Enjoy of personalized advice for the correct preventive and corrective maintenance of your equipment, thanks to Kalstein's manuals and articles, special catalogues and video tutorials.



Delivery Logistics

We take care of all the necessary logistics for the dispatch of your goods, whether is by sea, land or air.



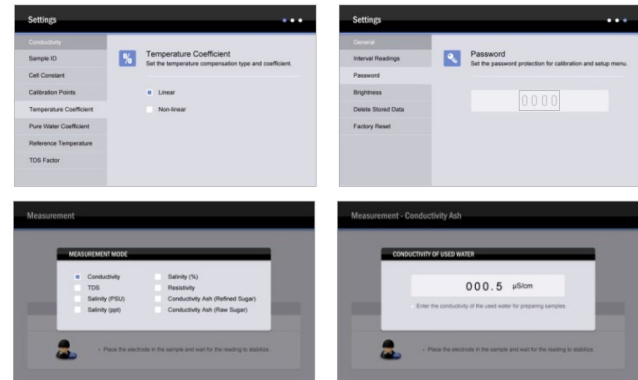
Kalstein Worldwide

With more than 25 years growing with our customers, Kalstein's multiformat and modern content, is now present in more than 10 countries and increasing.





KALSTEIN® pH Meters Benchtop Conductivity Meter Model YR01828



YR01828 Benchtop Conductivity Meter

Professional benchtop conductivity meter contains 4 measurement modes, the meter is suitable for measuring the conductivity, TDS, salinity and resistivity, accuracy: 0.5% F.S.

Features:

- ✓ 1 to 3 points calibration with automatic recognition for conductivity standards
- ✓ Selectable cell constant for matching the connected conductivity electrode or recalling the calibration factor
- ✓ Selectable reference temperature, TDS conversion factor, linear/non-linear/pure water compensations, seawater and practical salinity measurement modes
- ✓ Automatic temperature compensation ensures accurate readings over the entire range
- ✓ Auto-Read function senses and locks the measurement endpoint
- ✓ Timed Interval Readings sends the measurement data to a PC or printer
- ✓ Limit Alarm automatically alerts when reading exceeds the specified range
- ✓ Calibration due alarm prompts user to calibrate the meter regularly
- ✓ Calibration report provides the detailed information for checking the meter and sensor
- ✓ Password protection prevents the unauthorized calibration and settings
- ✓ Expanded memory stores or recalls up to 1000 data sets

- ✓ Reset function automatically resumes all settings back to the factory defaults

Measurement Parameters

YR01827: Conductivity, TDS, salinity, resistivity, conductivity ash, temperature

YR01828: Conductivity, TDS, salinity, resistivity, temperature

Standard accessories:

- ✓ CON-1 conductivity electrode
- ✓ TP-10K temperature probe
- ✓ Conductivity standard solutions 84 µS/cm, 1413 µS/cm, 12.88 mS/cm
- ✓ 12V DC power adapter

Optional Conductivity Electrodes

- ✓ CON-0.1: Suitable for measuring the low conductivity liquids (<10µS/cm)
- ✓ CON-1 : Suitable for general purpose applications
- ✓ CON-10 : Suitable for measuring the high conductivity liquids (>20mS/cm)
- ✓ TP-10K Temperature Probe: For temperature compensation and measurement
- ✓ Conductivity Standard Solutions: For conductivity calibration
- ✓ USB Cable: For transferring data or connecting power adapter
- ✓ Thermal Printer: For printing the measurement data



#Let'sgive more

Thanks to your purchase, a donation is made to a non-profit foundation that fights against cancer and helps vulnerable communities.



All rights reserved © KALSTEIN France S. A. S.,
Optimum Business Center 450 Rue Baden Powell,
• 34000 Montpellier, France.
Tél: +33 467158849 / +33 680760710/ +33 663810023
<https://kalstein.eu>
KALSTEIN FRANCE, S.A. S



KALSTEIN® pH Meters Benchtop Conductivity Meter Model YR01828

Model			YR01827	YR01828
Conductivity	Range	0.01-20.00, 200.0, 2000µS/cm, 20.00, 200.0mS/cm	•	•
	Resolution	0.001, 0.01, 0.1, 1	•	•
	Accuracy	±0.5% F.S.	•	•
	Calibration Points	1 to 3 points	•	•
	Calibration Solutions	10µS/cm, 84µS/cm, 1413µS/cm, 12.88mS/cm, 111.8mS/cm	•	•
TDS	Range	0-10.00, 100.0, 1000mg/L, 10.00, 200.0g/L	•	•
	Resolution	0.01, 0.1, 1	•	•
	Accuracy	±1% F.S.	•	•
	TDS Factor	0.1-1.0 (default 0.5)	•	•
Salinity	Range	0.00-80.00ppt, 0.00-42.00psu, 0.00-8.00%	•	•
	Resolution	0.01, 0.1, 1	•	•
	Accuracy	±1% F.S.	•	•
Resistivity	Range	0.00-30.00MΩ	•	•
	Resolution	0.01, 0.1, 1	•	•
	Accuracy	±1% F.S.	•	•
Conductivity Ash	Range	0-100%	•	—
	Resolution	0.01, 0.1, 1	•	—
	Accuracy	±1% F.S.	•	—
	Measurement Modes	Refined sugar or raw sugar	•	—
Temperature	Range	0-105°C/32-221°F	•	•
	Resolution	0.1°C/0.1°F	•	•
	Accuracy	±0.5°C/±0.9°F	•	•
	Offset Calibration	1 point, reading ±10°C	•	•
Other Specifications	Temperature Compensation	0-100°C, manual or automatic	•	•
	Temperature Coefficient	Linear (0.0-10.0%/°C), non-linear, pure water	•	•
	Reference Temperature	20/25°C	•	•
	Cell Constant	2-pole electrodes (K=0.1, 1, 10) or 4-pole electrode	•	•
	Stability Criteria	Standard or high-accuracy	•	•
	Calibration Due Alarm	1 to 31 days or off	•	•
	Interval Readings	10, 30, 60 seconds, 10, 30 minutes or off	•	•
	Password Protection	4 digits	•	•
	Memory	1000 data sets	•	•
	Communication Interface	USB	•	•
	Connector	6-pin nemi-DIN, 3.5mm jack socket	•	•
	Display	7 inches TFT LCD	•	•
	Power Requirements	DC12V, using AC power adapter, 220V/50Hz	•	•
	Dimensions	240(L)×220(W)×80(H)mm	•	•
	Weight	1.7kg	•	•



#Let'sgive more ♥

Thanks to your purchase, a donation is made to a non-profit foundation that fights against cancer and helps vulnerable communities.



All rights reserved © KALSTEIN France S. A. S.,
Optimum Business Center 450 Rue Baden Powell,
• 34000 Montpellier, France.
Tél: +33 467158849 / +33 680760710/ +33 663810023
<https://kalstein.eu>
KALSTEIN FRANCE, S.A. S





 **Kalstein**[®]
A different accompaniment, at your service

#LETSGIVEMORE 

**WITH THE
ACQUISITION
OF A KALSTEIN
EQUIPMENT**

YOU MAKE A CONTRIBUTION TO:



Fundación
Jacinto Convit

<https://www.jacintoconvit.org/>



<https://onetreepanted.org>



Humatem

Solidarité et coopération
biomédicale

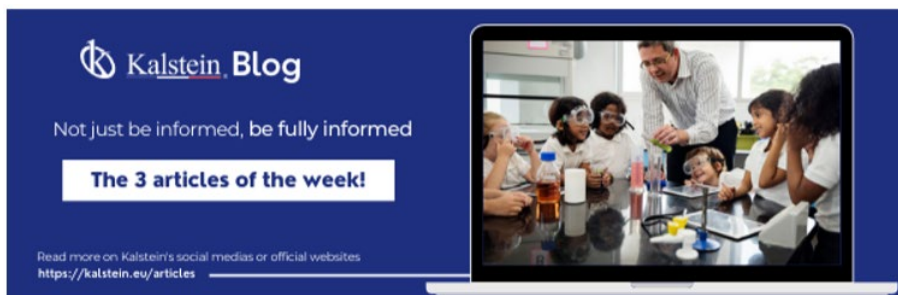
<https://www.humatem.org/>



**MANIAPURE
FOUNDATION USA**

<https://www.maniapurefoundation.org/>

Articles Kalstein
(Social Networks and Official Websites)



Kalstein Blog
Not just be informed, be fully informed

The 3 articles of the week!

Read more on Kalstein's social medias or official websites
<https://kalstein.eu/articles>



1
Read this ARTICLE NOW

How does the climate affect your microscope?

microscope is an instrument that allows observing and measuring objects that are too small to be seen with the naked eye. This is achieved through a complex system of lenses and mirrors, which form

Kalstein Blog

Article of the week:
How does the climate affect your microscope?

Read more on Kalstein's social medias or official websites
<https://kalstein.eu/articles>



2
Read this ARTICLE NOW

What is the importance of the laboratory refrigerator?

refrigerator is a device that is one of the most common pieces of equipment used in laboratories. It is a controlled environment (refrigerated space), various fluids and substances

Kalstein Blog

Article of the week:
What is the importance of the laboratory refrigerator?

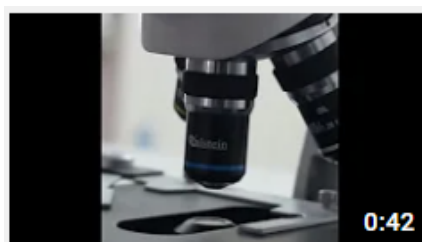
Read more on Kalstein's social medias or official websites
<https://kalstein.eu/articles>

Kalstein Training Videos
(Youtube Channel and Official Websites)



Kalstein France - Jacinto Convit Foundation / Alliances

23 views • 3 years ago



Kalstein's Microscopes

445 views • 1 week ago



PARIS - FRANCE
HEADQUARTER
2 Rue Jean Lantier
75001 Paris - France

Tlf: +33 (0) 01 78 95 87 89
Cel: +33 (0) 6 80 76 07 10
sales@kalstein.eu

<https://kalstein.eu/>
<https://www.kalstein.fr/>

